



Danmar Products

Equipping people. Enhancing lives.

Adapted Aquatics



sales@danmarproducts.com

www.danmarproducts.com

(800) 783-1998



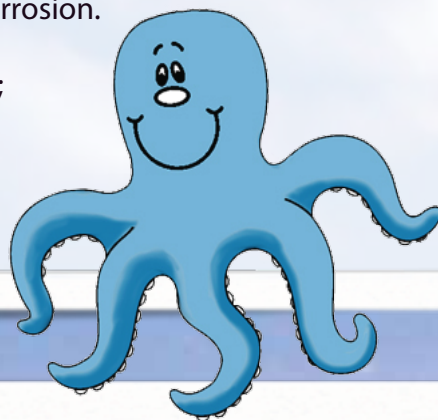
Swimming for Recreation & Therapy

Our swimming and flotation equipment is designed to accommodate different levels of ability in the water. We invite you to read the individual descriptions of each one to match the features offered with the results that you desire.

Danmar's swim equipment is constructed from Ensolite® marine flotation foam. It will not sink or absorb water, even if cut or punctured. Each piece is triple-coated with our durable vinyl finish, in bright yellow, making it highly visible in the water. We do offer a variety of custom colors* (Item# 3450) in the same durable vinyl finish for a small upcharge; see our color chart (Page 2) for the complete list. Black polypropylene webbing and super tough nylon buckles resist chlorine and salt water corrosion.

The equipment is easily cleaned by hand, using mild detergent; avoid any harsh chemical cleaners.

*Note: Custom colors will make the Item(s) nonreturnable and require upto 5-7 business days for fabrication.



To help you decide on the type of equipment and the appropriate size for the individual, here are a few basic considerations:

1. Individual's medical condition, considering the type and severity of the disability.
2. Amount of trunk and head control that the individual exhibits.
3. Amount of spasticity/rigidity exhibited.
4. Age, weight, and amount of body fat that contributes to natural buoyancy.
5. Teaching goals which are desired, i.e. maximum or minimum flotation for a full range of motion in the extremities.
6. Versatility of equipment: our swim aids are designed for all age groups and may be adapted to changing levels of proficiency.

IMPORTANT:

Supervision by competent personnel is a necessity while flotation equipment is in use.

Our customs department fabricates many styles of flotation equipment designed by adapted aquatic instructors for use by their clients. We have over 50 years of experience in the field and would take pride in making your design a reality.

(800) 783-1998

Fax: (734) 761-8977

sales@danmarproducts.com

www.danmarproducts.com

8720 Delta Swim System



The Delta Swim System is designed to aid in progressive swimming development, and is perfect for ambulatory individuals with postural balance and arm control. The front and back sections are designed to enhance the body's center of buoyancy, and the unique crotch strap design keeps the Delta in place. It is ideal for rehab involving walking in deep water, running, and aerobic exercises, and can also be used to pinpoint muscle strengthening using resistance training. This component system is made with removable pieces, so as swimming skills improve, pads can be removed to help achieve independence.

Colors: Sunshine Yellow & Royal Blue.

Sizes	Product Dimensions	
Small:	30 - 60 lbs.	11" L x 13" W.
Medium:	60 - 150 lbs.	15" L x 17" W.
Large:	150 - 240 lbs.	19" L x 20" W..



8721 Pad Plus



Offered to modify the Delta Swim System (Item# 8720) and Tri-Swim (Item# 8728 - Page 32), the Pad Plus may be attached to the front section to add buoyancy and raise the body position in the water. Order it in the same size as the Tri-Swim or Delta Swim System.



Colors: Sunshine Yellow & Royal Blue.

Sizes	Product Dimensions	
Small:	50 - 65 lbs.	8" L x 6" W.
Medium:	135 - 155 lbs.	11" L x 8" W.
Large:	210 - 240 lbs.	15" L x 10" W.

8723 Sectional Raft



For individuals who are insecure in the water or are non-ambulatory, the Sectional Raft supports and cradles the body. Rather than holding a person on top of the water, our raft allows water to flow around the body, which enables interaction with the environment and helps reduce anxiety. The head pad is reversible with lateral supports for slight head/neck support. Shoulder straps snap over the arms for an easy fit, providing room for arm propulsion and preventing the body from rolling. The bottom row of sectional pieces can be folded under for greater range of motion in the lower body.

Note: Care should be taken to watch for air chill on the parts of the body above the water surface. To prevent this, towels should be placed over the body.

Color: Sunshine Yellow.

Sizes

Small: 36" - 54".

Large: 54" - 74".

Product Dimensions

38" L x 22 1/2" W.

50" L x 32" W.



8724 Swim Rings



Create your own personal flotation device with these versatile rings! Sets may be snapped together for neck, chest, torso, or body support. Minis can be used individually and together on arms and/or legs, as well as along with other swim aids. Individual rings can be added or removed to increase or decrease the amount of flotation, as well as to adjust for comfort. Set comes with a standard 43" strap, Minis have a 12" strap, and 20 individual rings. Ring diameter is determined by size: **Mini** - 2", **Small** - 2 1/2", **Medium** - 3 1/2", and **Large** - 4 1/2". An extra long 48" strap is available per request at no extra charge.

Color: Sunshine Yellow.



Sizes

Mini: 2 sets.

Small: 20 - 30 lbs.

Medium: 30 - 80 lbs.

Large: 80 - 200 lbs.

Ring Diameter

2".

2 1/2".

3 1/2".

4 1/2".



8725 Head Float



Now therapy is made easier for individuals with reflex domination. There is no need to support the head manually and hands are free. Superb cushioning design allows the head to rest without pressure on the spinal column, which encourages neutral positioning. Independence for everyone within an aquatic setting makes this truly a valuable aid. The Float may be customized by adding a beveled neck area for individuals with more compact necks. Neck circumference: **Small** - 11", **Medium** - 13", and **Large** - 15".

Color: Sunshine Yellow.

Sizes

Small: 20 - 30 lbs.

Medium: 40 - 50 lbs.

Large: 60 - 175 lbs.

Product Dimensions

16" L x 12" W x 1 1/2" H.

20" L x 13" W x 2" H.

22" L x 14" W x 3" H.



8727 Dolphin



The Dolphin is ideal for physically involved individuals who have head/trunk control, but may need to compensate for uneven weight. Using the side pads helps minimize a user's tendency toward lateral rotation. The front chest pad provides additional lift and is removable. The crotch strap may be used to keep the Dolphin in position while swimming.

Color: Sunshine Yellow.



Sizes

Small: 30 - 75 lbs.

Large: 75 - 200 lbs.

Product Dimensions

19" L x 12" W.

22" L x 14" W.

8728 Tri-Swim



A favorite in geriatric or rehab swim programs, the Tri-Swim gives supplementary support for those who possess some swimming skills. A moderate amount of lift helps maintain the body in a traditional swimming position. It features a Quick-Release Buckle waist strap for easy on/off. Use it with Pad Plus (Item# 8721 - Page 29) for added bouyancy.

Colors: Sunshine Yellow & Royal Blue.

Sizes

Small:	30 - 50 lbs.
Medium:	60 - 150 lbs.
Large:	160 - 210 lbs.

Product Dimensions

8" L x 11" W.
9.5" L x 15" W.
11 1/2" L x 19" W.



8729 Stabilizer Bar

Lightweight! The Stabilizer Bar helps to maintain balance and equilibrium during walking/gaiting pool exercises, as used in some stroke recovery therapies. It is also great for resting on or extending out in front for kicking drills, as well as in workouts for individuals with mild arthritis. The amount of flotation can be adjusted by adding or removing rings; additional rings are available if more flotation is desired.



Color: Sunshine Yellow.

Size

One Size .

Product Dimensions

3' Long.



8730 Comfort Mat



This mat means comfort! Use in the many situations where foam padding would be welcome. Place at the pool's edge to ease entry/exit. In the shower, these moisture-proof mats offer a soft floor covering. In the locker room, they insulate against cold tile floors and provide changing comfort. They make a great flotation raft too.

Color: Sunshine Yellow.

Size

One Size.

Product Dimensions

25" L x 40" W x 1" H.



8735 Head Float & Stabilizer Bar



When working with people who may hyper-extend or tip backwards or sideways, this combination Head Float & Stabilizer Bar helps keep the face out of the water. This works well not only for swimmers with Athoid CP, but also for those who roll sideways and backwards. Now they can stretch and turn their heads when interacting with others without tipping or rolling. The float may be adjusted for individuals with shorter necks by beveling the neck area. Neck circumference: **Medium** - 13", and **Large** - 15".

Includes 3' Stabilizer Bar.

Color: Sunshine Yellow .



Sizes

Medium: 40 - 50 lbs.

Large: 60 - 175 lbs.

Product Dimensions

20" L x 13" W x 2" H.

22" L x 14" W x 3" H.

8722 Swim Loops

Designed for use on arms and ankles, our Swim Loops can be isolated to focus on strengthening one area, can be used in conjunction together and with other swim aids to provide supplemental support, as well as in therapy to build strength and confidence. Arm Loops have 2 differing size holes for various arm placement; ankle loops have 2 openings of the same size.

Color: Sunshine Yellow.

Sizes

Small

Large

Product Dimensions

1" thickness

1 1/2" thickness



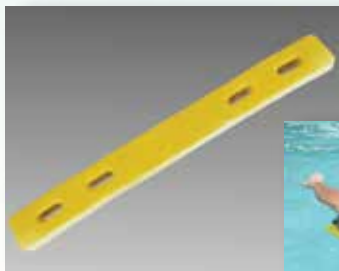
8726 Swim Links

For use alone or in conjunction with other swim aids, these Swim Links quickly snap securely together around wrists and ankles with our easy-to-use Quick-Release Buckles, featuring a slide buckle for optional adjustment. Swim Links can also be snapped together for added buoyancy and support; ideal for use in both recreational and therapeutic environments. **Color: Sunshine Yellow. One size. Set of 2.**

8731 Latch and Splash

There's no hardware in these soft, size adjustable flotation aids. Simply use on arms and/or legs to provide supplemental support, while in water. Beneficial in both therapeutic and recreational settings, the Latch and Splash adds buoyancy and can be used to increase independence in the water.

Color: Sunshine Yellow. One size. Set of 2.



8733 DanBar

These versatile foam bars are perfect for work and play! Use them for low-impact exercise and rehab to add stability and resistance, or to leisurely float around the pool. **Color: Sunshine Yellow. One size.**

Accessories & Replacement Items for Swim Equipment

7731 Sectional Raft with Snap Rings.



7732 Delta Crotch Strap

Specify Small, Medium, or Large.



7733 Delta or Tri-Swim Neck Collar

Specify Small, Medium, or Large.



7734 Dolphin Crotch Strap

Specify Small or Large.



7735 Swim Rings Replacement Strap

Specify standard length or extra long.



7736 Individual Replacement Rings

Specify Small, Medium, or Large.



7737 Dolphin Replacement Pads

Specify Small or Large.

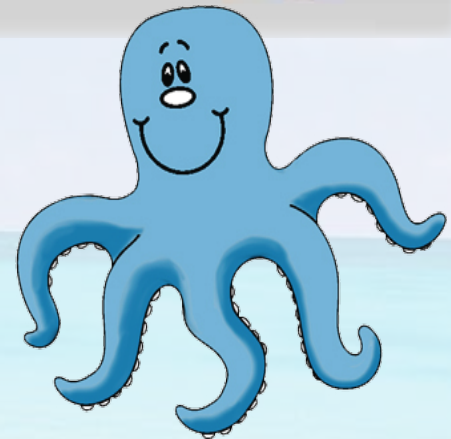
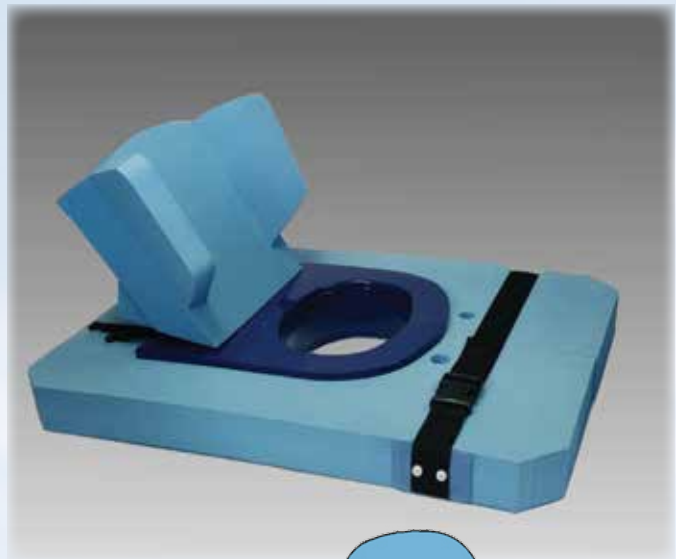
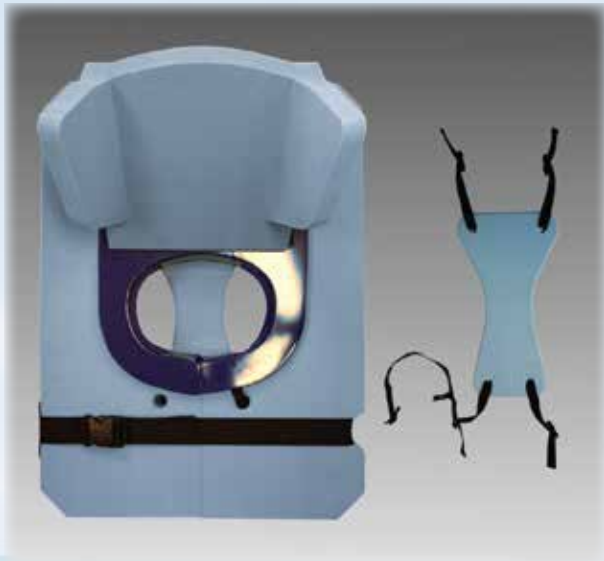


7738 Replacement Head Float Strap

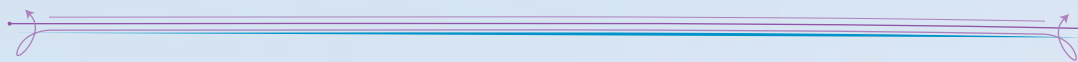
Specify Small, Medium, or Large.



Call or e-mail us for Custom Swim Aids
800-783-1998 or sales@danmarproducts.com

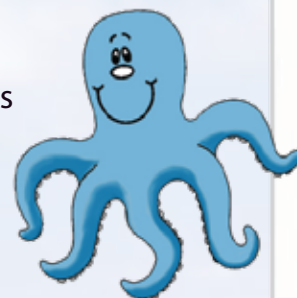


Notes



To help you decide on the type of equipment and the appropriate size for the individual, here are a few basic considerations:

1. Individual's medical condition, considering the type and severity of the disability.
2. Amount of trunk and head control that the individual exhibits.
3. Amount of spasticity/rigidity exhibited.
4. Age, weight, and amount of body fat that contributes to natural buoyancy.
5. Teaching goals which are desired, i.e. maximum or minimum flotation for full range of motion in the extremities.
6. Versatility of equipment: Our swim aids are designed for all age groups and may be adapted to changing levels of proficiency.



IMPORTANT:

Supervision by competent personnel is essential while flotation equipment is in use.

Our customs department fabricates many styles of flotation equipment designed by adapted aquatic instructors for use by their clients. We have over 50 years of experience in the field and would take pride in making your design a reality.



Contacto



773 139 29 24